

Airport Safety 101



Federal Aviation
Administration

General Aviation Airports

Presented to: **AirTAP Fall Forum 2007**

By: Jesse Carriger, Assistant Manager

Minneapolis Airports District Office

Date: October 17, 2007

General Aviation Airport Safety

- **Purpose/Background**
- **Airport Self Inspection**
 - Self Inspection Checklist
 - Advisory Circular 150/5200-18C
 - Self Inspection training resources



General Aviation Airport Safety

- **Wildlife Management**
 - Coordination with USDA, State DNR
 - Physical Deterrents
 - Controlling attractants

- **Airport Emergency Plans**
 - Airport Fire and Rescue
 - Mutual Aid
 - AIP Eligibility??



General Aviation Airport Safety

- **Construction Safety**
 - Advisory Circulars
 - Construction Safety Checklist
 - Issuing proper NOTAMs

- **Q & A**



Purpose/Background

- **Purpose-**

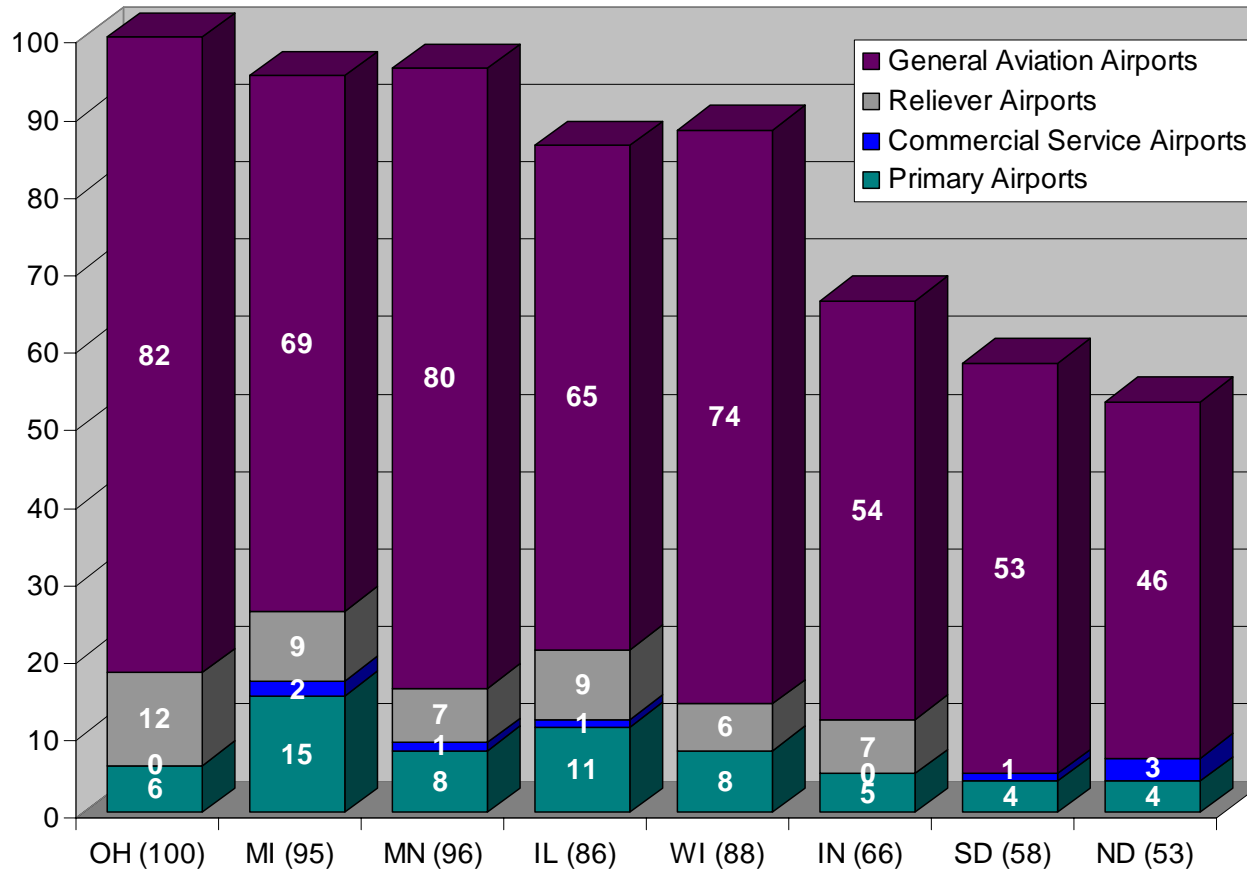
- GA Airport Safety as it relates to Part 139
- Best Practices

- **Various jobs including-**

- Minneapolis Airport District Office (MSP ADO)
- Airport Certification Safety Inspector (Part 139)
- Airport Security Inspector (Part 107)
- Operations Supervisor at St. Louis Int'l (STL)
- Maintenance at Spirit of St. Louis Airport (SUS)



Great Lakes Airports by State and Type



1. Airport Self Inspection Program

- **Key to maintaining a safe operation.**
- **Provides standardized documentation.**
- **Helps minimize risk to airport sponsors.**
- **Follows Advisory Circular 150/5200-18C.**
- **Standard daily/weekly checklist.**



1. Airport Self Inspection Program

During inspections of the airfield, airport employees who conduct self-inspections inspect the following physical facilities:

- **Pavement**
- **Runway Safety Areas**
- **Pilot Visual Aids**
- **Runway Holding Positions**
- **Wind Direction Indicators**
- **NAVAIDS**
- **Obstructions**
- **Construction Areas**
- **Nighttime conditions**



1. Airport Self Inspection Program

Other programs that should be reviewed periodically-

- Wildlife Hazard Management Program**
- Airport Condition Reporting**
- Accuracy of Aeronautical Information (Airport Master Record 5010)**
- Airport Maintenance Practices**



Airport Self Inspection Program

- **Inspect the runways and taxiways in order to ascertain the condition of pavements, markings, lighting, signs, abutting, shoulders and safety areas.**
- **Check the approach of each runway to determine the controlling obstruction.**
- **If construction is in progress, determine if there are any potential hazardous conditions and adequate construction area marking and lighting.**



Self Inspection Forms

AIRPORT DAILY SELF-INSPECTION CHECKLIST

DATE:		AM CHECK	PM CHECK	REMARKS
PAVEMENT AREAS	Pavement Lip Over 3"			
	Holes 5" Diam. 3" Deep			
	Cracks/Spalling			
	FOD: Gravel/Debris/Etc.			
	Rubber Deposits			
SAFETY AREAS	Ponding			
	Ruts/Humps/Erosion			
	Drainage Problem			
MARKING	Objects/Fragibly Mounted			
	+ 3" Frangible Point			
LIGHTING & GUIDANCE SIGNS	Clearly Visible			
	Obscured/Dirty/Faded			
	Damaged/Missing			
NAVAIDS	Inoperative			
	Faulty Aim/Adjustment			
	Rotating Beacon			
FENCING	Wind Indicator			
	VASI's/REIL's			
	Obstruction Lights			
WILDLIFE	Perimeter Fence/Gates			
	Terminal Fence/Gates			
CONSTRUCTION	Signs			
	Birds/Animals			
SNOW/ICE	Barricades/Lights			
	Current NOTAM			
	Surface Conditions			
INSPECTOR:	Snowbank Clearance			
	Lights/Signs Obscured			
	NOTAMS Current			
PART 139 Discrepancies Found		Corrective Action Taken		

Airfield Map on Reverse Side

DAILY INSPECTION CHECKLIST

(✓) Means item is okay.
(X) Means item is deficient.

All items marked as deficient will be described under the remarks section.
All corrective action to be noted and/or initialed on date of correction.

Week Beginning ___/___/___

		SUN	MON	TUES	WED	THURS	FRI	SAT
PAVEMENT AREAS	Pavement Lip Over 3"							
	Holes 5" Diam. 3" Deep							
	Cracks/Spalling							
	FOD: Gravel/Debris/Etc.							
	Rubber Deposits							
SAFETY AREAS	Ponding							
	Ruts/Humps/Erosion							
	Drainage Problem							
MARKING	Objects/Fragibly Mounted							
	+ 3" Frangible Point							
LIGHTING & GUIDANCE SIGNS	Clearly Visible							
	Obscured/Dirty/Faded							
	Damaged/Missing							
NAVAIDS	Inoperative							
	Faulty Aim/Adjustment							
	Rotating Beacon							
FENCING	Wind Indicator							
	VASI's/REIL's							
	Obstruction Lights							
WILDLIFE	Perimeter Fence/Gates							
	Terminal Fence/Gates							
CONSTRUCTION	Signs							
	Birds/Animals							
SNOW/ICE	Barricades/Lights							
	Current NOTAM							
	Surface Conditions							
INSPECTOR:	Snowbank Clearance							
	Lights/Signs Obscured							
	NOTAMS Current							

Remarks:



Airport Safety Self-Inspection DVD

Supplemental to Advisory
Circular 150/5200-18C,
Airport Safety Self Inspection



Obscured lights



Airport Self Inspection Program

Are your signs correct???



Panels out of order



New Runway A?



Which way do I go??



Maintain Markings



2. Wildlife Hazard Avoidance

- **AC 150/5200-33B *Hazardous Wildlife Attractants On or Near Airports***
- **Check for presence of any wildlife or wildlife attractants that would create a potential hazard.**
- **Document all sightings.**
- **Conduct a wildlife hazard assessment using a qualified wildlife biologist.**



2. Wildlife Hazard Avoidance

- **Install wildlife perimeter fencing to alleviate problems with deer/mammals.**
 - 10 feet with three strands of barb
 - Suggest in ground at least 2 feet
- **Decrease attractants near the airport.**
 - Water treatment plants
 - Landfills
 - Water attractants



2. Wildlife Hazard Avoidance

- **Develop a wildlife hazard management plan.**
- **Decrease attractants near the airport-**
 - Water treatment plants
 - Landfills
 - Water attractants
- **AIP eligible for assessment, subsequent plan**



Wildlife in Minnesota?



More likely....



3. Airport Emergency Plans

- **Advisory Circular 150/5200-31A, *Airport Emergency Plan (AEP)*.**
- **Guidance on developing an AEP.**
- **Conducting a simulated disaster drill.**
- **After accident checklist.**
- **Local aid agreements in place.**



3. Airport Emergency Plans

- **Access points to the airfield outlined.**
- **Phone lists updated.**
- **Responding personnel trained.**
- **Water rescue provisions (if near a lake).**
- **Equipment AIP eligible??**



4. Construction Safety

- **Advisory Circular 150/5370-2, *Operational Safety on Airports during Construction***
 - **Construction safety related guidance.**
 - **Required for airports with grant obligations.**
 - **Best practices and procedures for all airports.**
 - **Sample construction safety plan included as Appendix 3.**



4. Construction Safety

- **Construction Safety Checklist.**
- **Issuing proper NOTAMs.**
- **Coordinating with all entities involved.**
- **Provide a safe operating environment.**
- **ACs required for Federally funded Projects**

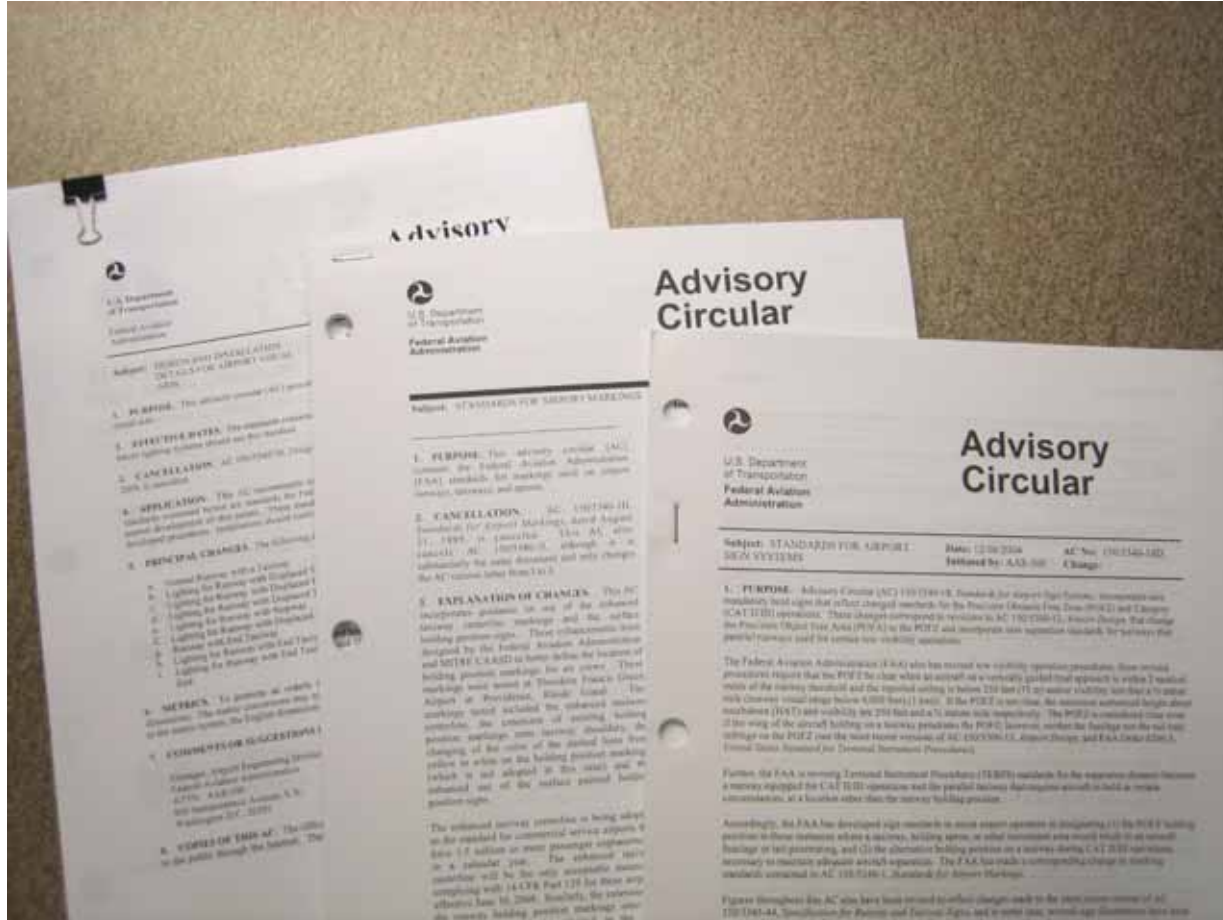


4. Construction Safety



Advisory Circulars Updated

(Available online or by mail)



General Aviation Airport Safety

- **Get more involved with your consultants.**
- **Available resources-**
 - Vehicle Guide to Airport Markings
 - Airport Self Inspection DVD
 - Self inspection checklist
 - www.faa.gov
- **Stay informed!**



Accident at STL



Questions/Comments?

Additional information at

www.faa.gov

Minneapolis Airports District Office

612-713-4350

Minnesota Office of Aeronautics

612-234-7200

